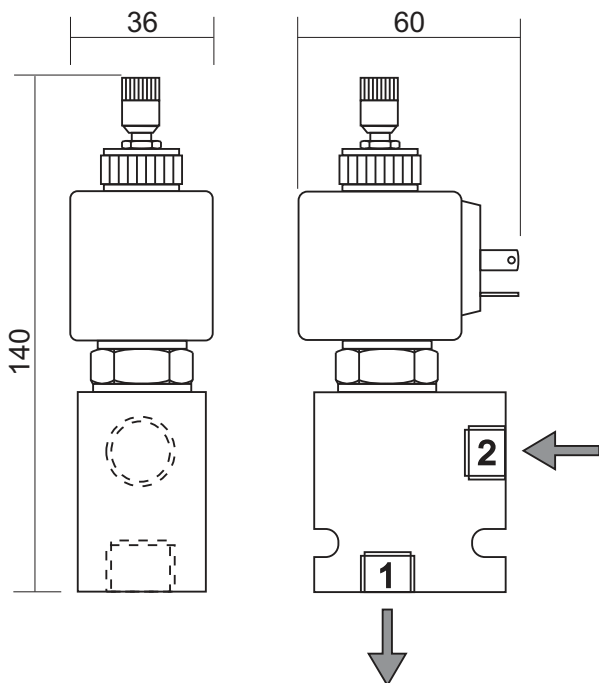


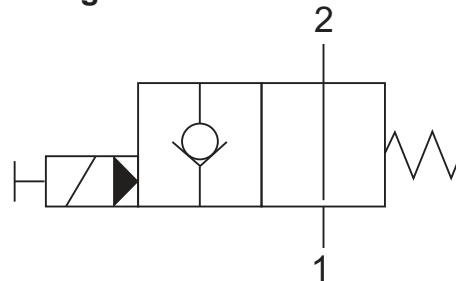
**Technical specifications**

Max pressure	210 bar (aluminium body)
Max flow	40 L/min
Oil leakage	0,25 cc/min
Available voltage	12Vdc or 24Vdc
Solenoid power	22 W
Protection class	IP 65 (with connector)
Cartridge torque	40 Nm
Ring nut torque	2 Nm
Weight (with coil)	0,6 Kg
Fluid type	Mineral oil 15 ÷ 250 cSt
Cartridge type	E08N-21
Connections	G 3/8"

**Dimensions (mm)**



**Hydraulic diagram**



With the solenoid *switched off* the oil flows in the direction indicated by the arrows. With the solenoid *switched on* the oil flow is blocked.

The solenoid valve is equipped with an emergency manual command type "Push & Twist".

**Spare parts list (code and description)**

- PINA138** - Complete 12V valve (aluminium body)
- PINA238** - Complete 24V valve (aluminium body)
- A2000700062** - Solenoid 12V (without connector)
- A2000700063** - Solenoid 24V (without connector)