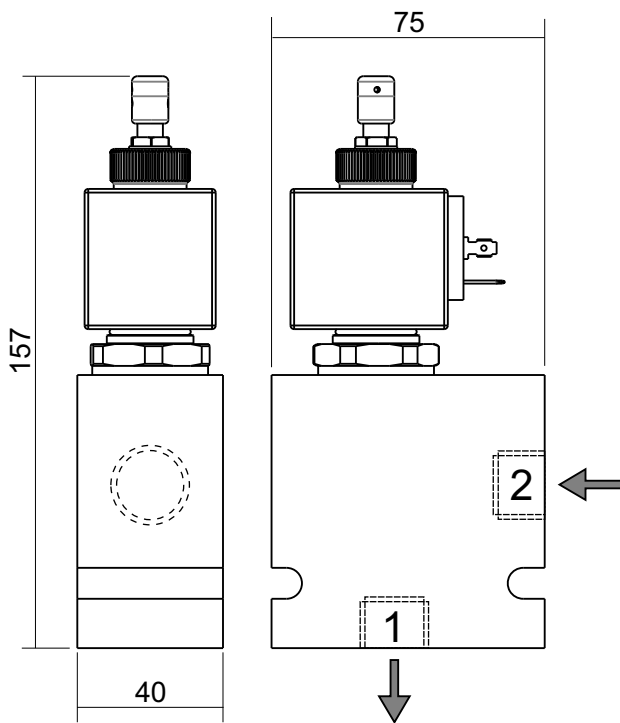


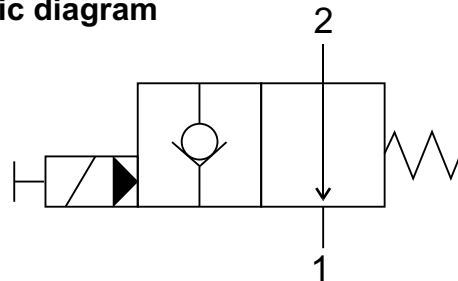
Technical specifications

| | |
|--------------------|--|
| Max pressure | 210 bar (aluminium body) 350 bar (steel body) |
| Max flow | 150 L/min |
| Oil leakage | 0,25 cc/min |
| Available voltage | 12Vdc or 24Vdc |
| Solenoid power | 22 W |
| Protection class | IP 65 (with connector) |
| Cartridge torque | 60 Nm |
| Ring nut torque | 2 Nm |
| Weight (with coil) | 1,0 Kg |
| Fluid type | Mineral oil 15 ÷ 250 cSt |
| Cartridge type | E12N-21 |
| Connections | G 3/4" |

Dimensions (mm)



Hydraulic diagram



With the solenoid *switched off* the oil flows in the direction indicated by the arrows.
With the solenoid *switched on* the oil flow is blocked.

The solenoid valve can be equipped with an emergency manual command type "Push & Twist".

Spare parts list (code and description)

PINA__34E_ - Complete 12V valve (connector included)

- S:** steel body
- 1:** 12V / **2:** 24V
- P:** without / **Q:** with Push&Twist manual command

A2000700062 - Solenoid 12V (without connector)

A2000700063 - Solenoid 24V (without connector)